



Complete Streets Sharpsburg

Brittany Reno
Sharpsburg Neighborhood Organization

About Sharpsburg

~**3,400** residents • **.63** sq. miles

23% of residents have no car

27% of residents live in poverty

13.2% unemployment rate

Air Pollution & Flooding

How can we address
multiple challenges with
very limited resources?

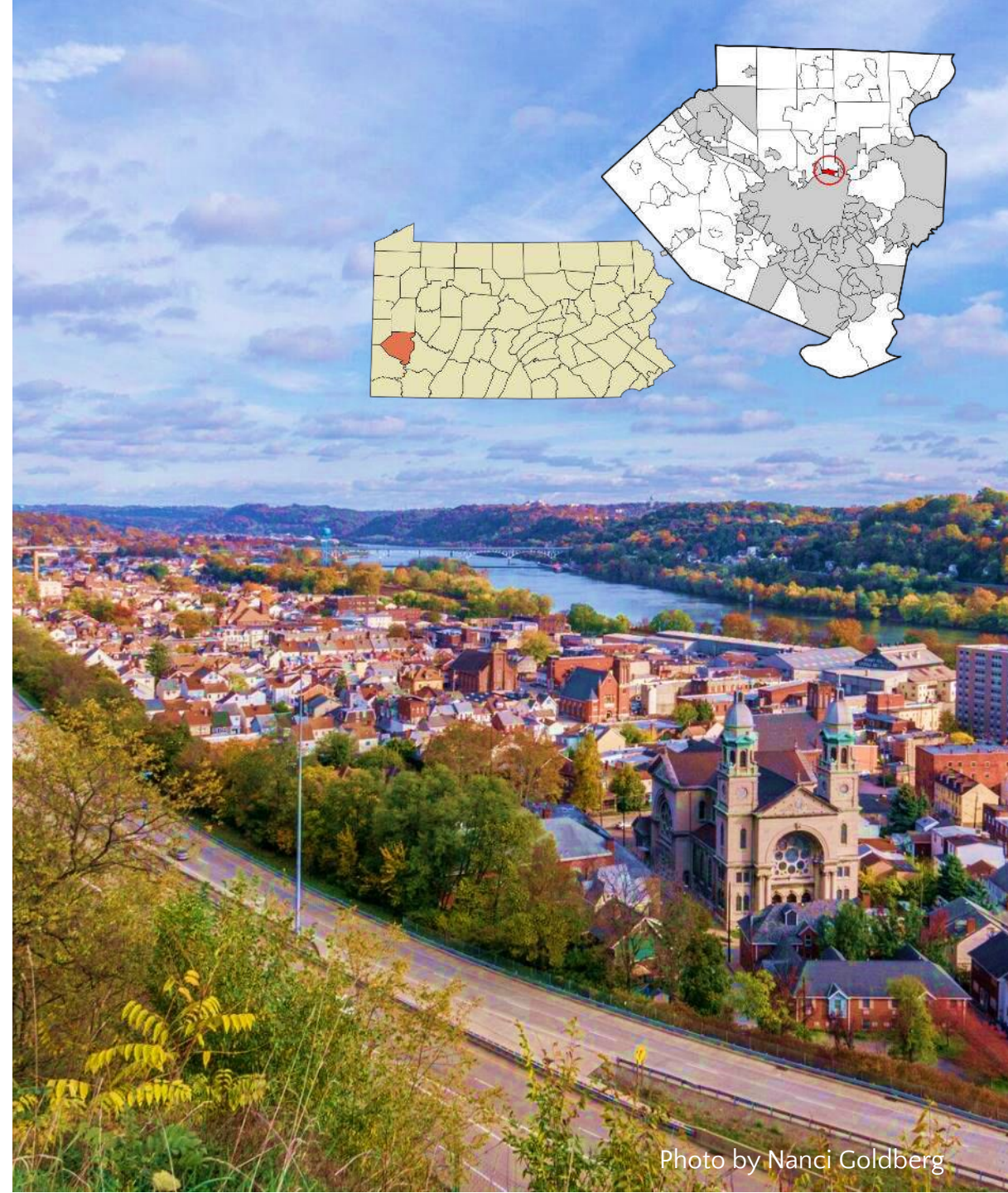


Photo by Nanci Goldberg



Photo by Jan Pakler for the Tribune Review

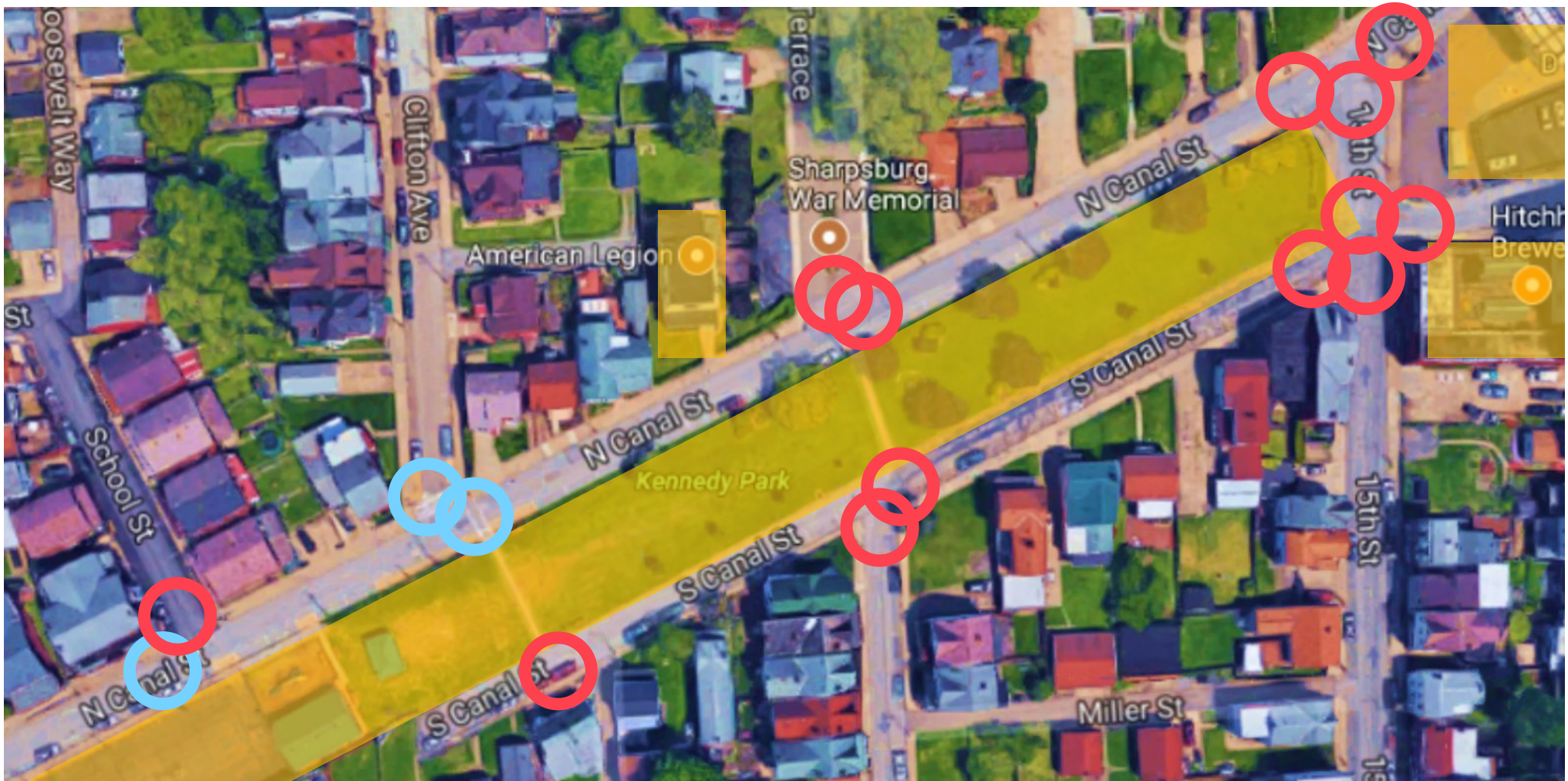
Why Complete Streets?

- Safety & Health
- Workforce Development
- Economic Development
- Community Vision Plan



Public Safety

- Existing Crosswalks
- Popular Unmarked Crossing Areas
- Businesses or Public Parks







Public Health

- USDA-designated **food desert**
- **27%** smoking rate
- No primary care doctor in borough limits
- **High rates of hypertension**
- **-20%** of residents are living with a disability
- **Air pollution**

Workforce & Economic Development

- Improve pedestrian/public transit experience
- Make Sharpsburg Business District more walkable + accessible
- Better connect to neighboring communities + employment centers



How We Did It (with lots of help)

- 1.) Engaging knowledgeable partners
- 2.) Affirming public buy-in and understanding needs and challenges
- 3.) Drafting and passing the resolution
- 4.) Incorporating the principles into every decision (small and large)



Engaging Knowledgeable Partners

- CONNECT
- American Heart Association
- Bike Pittsburgh
- PA WalkWorks

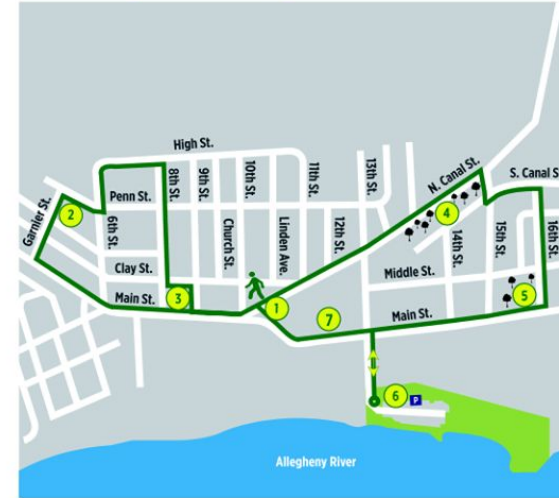


**American
Heart
Association®**





Sharpsburg Main & Canal Walking Route



pennsylvania
DEPARTMENT OF HEALTH

- ① Heinz Memorial Plaza & Chief Guyasuta Statue
- ② St. Mary Church
- ③ Corporal Kenneth Curley Memorial Parklet
- ④ Kennedy Park
- ⑤ 16th St. Children's Park
- ⑥ James Sharp Landing
- ⑦ Sharpsburg Community Library & Sharpsburg Community Garden
- P Parking
- Start/Stop
- Distance 1.83 Miles

Steps to a Healthier You

pawalkworks.com



Affirming Public Buy-In

- Complete Streets Postcards
- Community Vision Plan Workshops



HOW CAN WE IMPROVE OUR STREETS TO MAKE THEM SAFER FOR EVERYONE?

Right now, many of our streets lack sidewalks, crosswalks, bike lanes, and other components that would make healthy travel options safer for everyone. When it comes to promoting safe travel and healthy living, we need to make sure street design is a part of the conversation.

Your voice and experience can make an impact on this discussion. In your own neighborhood, you've likely seen dangerous intersections and one too many close calls. Complete street policies can help create a shared environment that's safe for everyone on the road, no matter how they choose to travel.

Take action today. Sign up below to help bring streets built to share™ to [CITY/STATE], and visit [URL PLACEHOLDER] to get involved today.

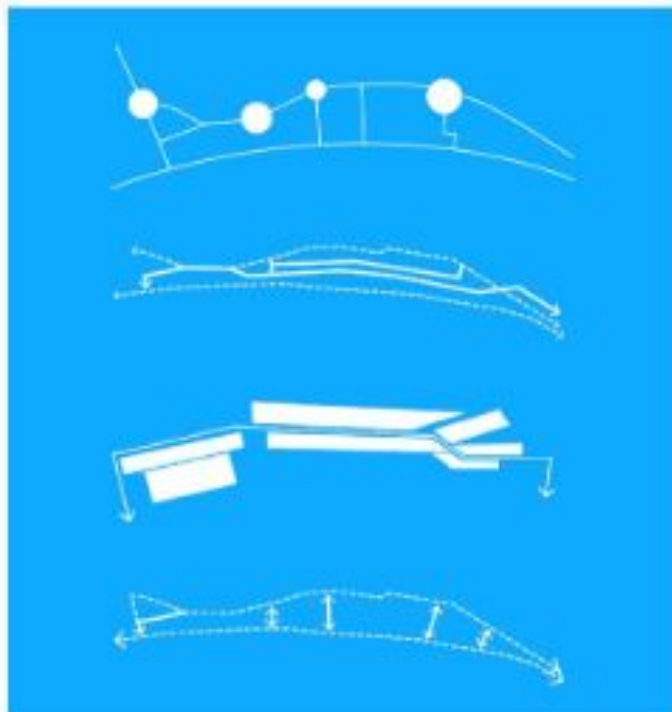
NAME



Photo by Christine Manganas for the Tribune Review

Community Vision & Design Plan





ENHANCE GREEN LINKS

Connect existing green assets
and develop new ones.

PRIORITIZE THE PEDESTRIAN

Make walking, biking, and
public transit easier and safer.

STRENGTHEN THE VILLAGE

Stabilize and improve
existing character.

CONNECT TO THE RIVER

Reconnect to the riverfront
physically and mentally.

URBAN SYSTEMS

The recommendations for Sharpsburg's urban systems are informed by Sharpsburg's existing assets and current and future challenges (including market pressure), and act as overarching place making goals. These urban systems guide the project recommendations and act in fulfillment of Sharpsburg's identity.

A community of opportunity is defined by its systems:

S1

ENHANCE GREEN LINKS

pg. 82

S3

STRENGTHEN THE VILLAGE

pg. 96

S2

PRIORITIZE THE PEDESTRIAN

pg. 88

S4

CONNECT TO THE RIVER

pg. 102



Drafting & Passing the Resolution

- Adapted from Borough of Elizabethtown and City of Pittsburgh policies
- Advocacy to Borough Council from Bike Pittsburgh and PA WalkWorks









Etna-Sharpsburg
Gateway Park



What's Next?

- Enforcement on **new developments & improvements** (streetscape redesign + Riverfront 47)
- Seeking grants for **new infrastructure** and bike/walking route development
- Encouraging **multi-modal exploration** through special events



Photo by Nanci Goldberg



Photo by AIA Pittsburgh

Thank you!

Saturday
June 2
11am-4pm
Main Street

Open Streets
SHARPSBURG

Free
Fun for
ALL

For more information:

brittany@sharpsburgneighborhood.org

412-407-7661